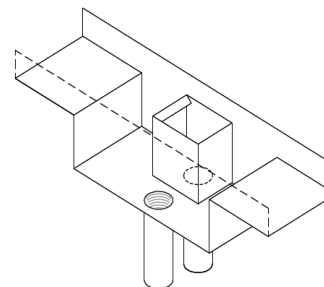
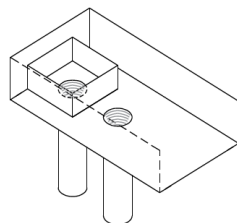




STAGE 2 Advanced Performance Based Design.



Association of Hydraulic Services Consultants Australia
VICTORIA CHAPTER INC.

WORLD FIRST CERTIFICATE COURSE



Presented by
Assoc. Professor
Terry Lucke



This course will teach students how
to use the Advanced Performance
Based Design techniques developed
by the AHSCA Research Foundation.



The AHSCA VIC in conjunction with the AHSCA Research Foundation and Associate Professor Terry Lucke invite you to attend the Stormwater 1 Day Advanced Performance Based Design Course.

- Date** Sat 6th, Mon 8th or Tues 9th of October 2018
(Select 1 day)
- Venue** Rising Sun Hotel South Melbourne
- Starts** 8:30 am
- Duration** Full Day Certificate Course
- Cost** \$800.00
- Open to** Fellow, Full, Associate and Design Members approved by the AHSCA

THE COURSE WILL INCLUDE:

- > Methods of Calculating roof drainage using the Online Calculator for AS3500.3 Compliant Designs
- > Methods of Calculating roof drainage using the Online Calculator for Performance Based Designs
- > 12 New Overflow Configurations
- > New Design methods for flow up to 100 lit/sec with a single downpipe
- > Proficiency Exam

BOOK TODAY TO ENSURE YOUR SEAT

- 8.30 General Information & Background
- 10.00 Coffee break
- 10.15 Using the free Online Calculator for AS3500.3 Compliant Designs
- 11.15 Coffee break
- 11:30 Using the pay per use Online Calculator for Performance Based Designs
- 12:30 Lunch
- 1:00 Issues to Consider in Design
- 2:00 Coffee Break
- 2:15 Exam: Proficiency Test
- 3.45 Discussion and Close

Lead the industry, improve your Continuing Professional Development. Learn how to exceed the standard to better serve your clients.

To register your attendance
please email secretary@ahscavic.com.au